

Centre of Industry and Logistics

LOVOSICE

and its part

-

Trans-sped-consult, s.r.o.

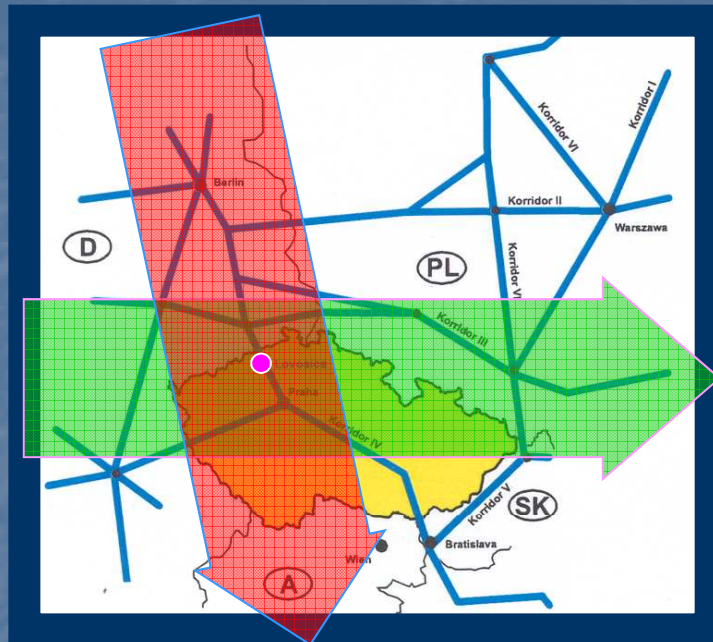
[TSC]

TSC

View of Lovosice with the mountain Lovoš



Logistic in Lovosice



**Nord
South**

Hamburg
(Berlin)
Magdeburg
Dresden
LOVOSICE
Prague
Bratislava
Corridor No IV

**West
East**

Rotterdam
Amsterdam
Hannover
Magdeburg
Dresden
LOVOSICE
Corridor No V
Corridor No III

Highway



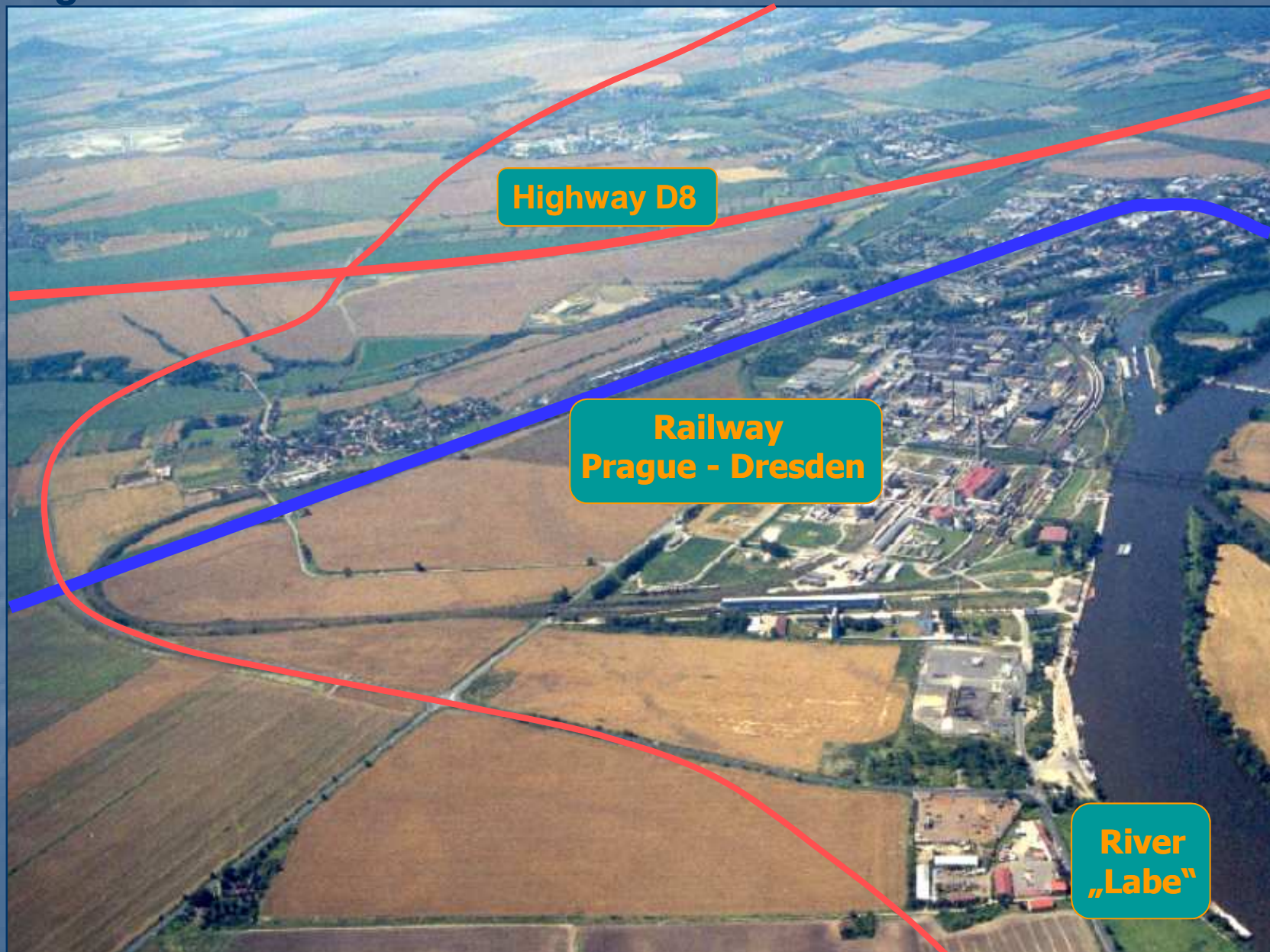
Railway



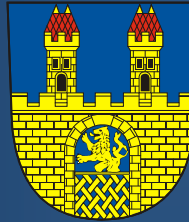
River



Logistic in Lovosice



Town Lovosice



10.000 inhabitants
unemployment cca 12%

Transport connections:

- Highway D8
- Railway Berlin / Prague
- River Elbe

Resources of employers:

in 30 minutes of public transport
cca 250.000 inhabitants
(Ústí n. L., Litoměřice, Most, Teplice, Litvínov, Roudnice, Bohušovice, etc.)

Agricultural-industrial region:

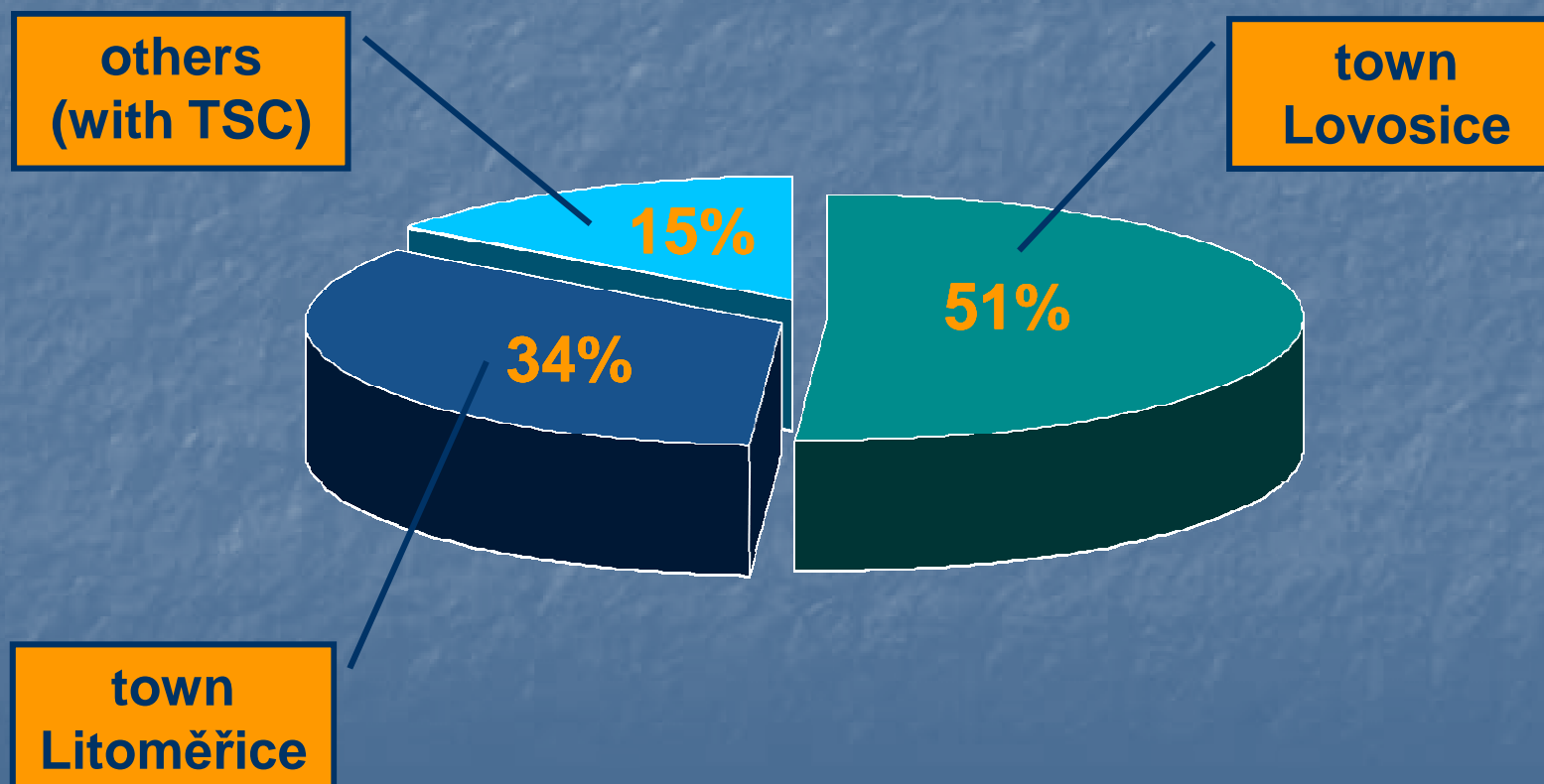
qualificate employers experiens
with industrial production,
unqualificate employers for
large scale production



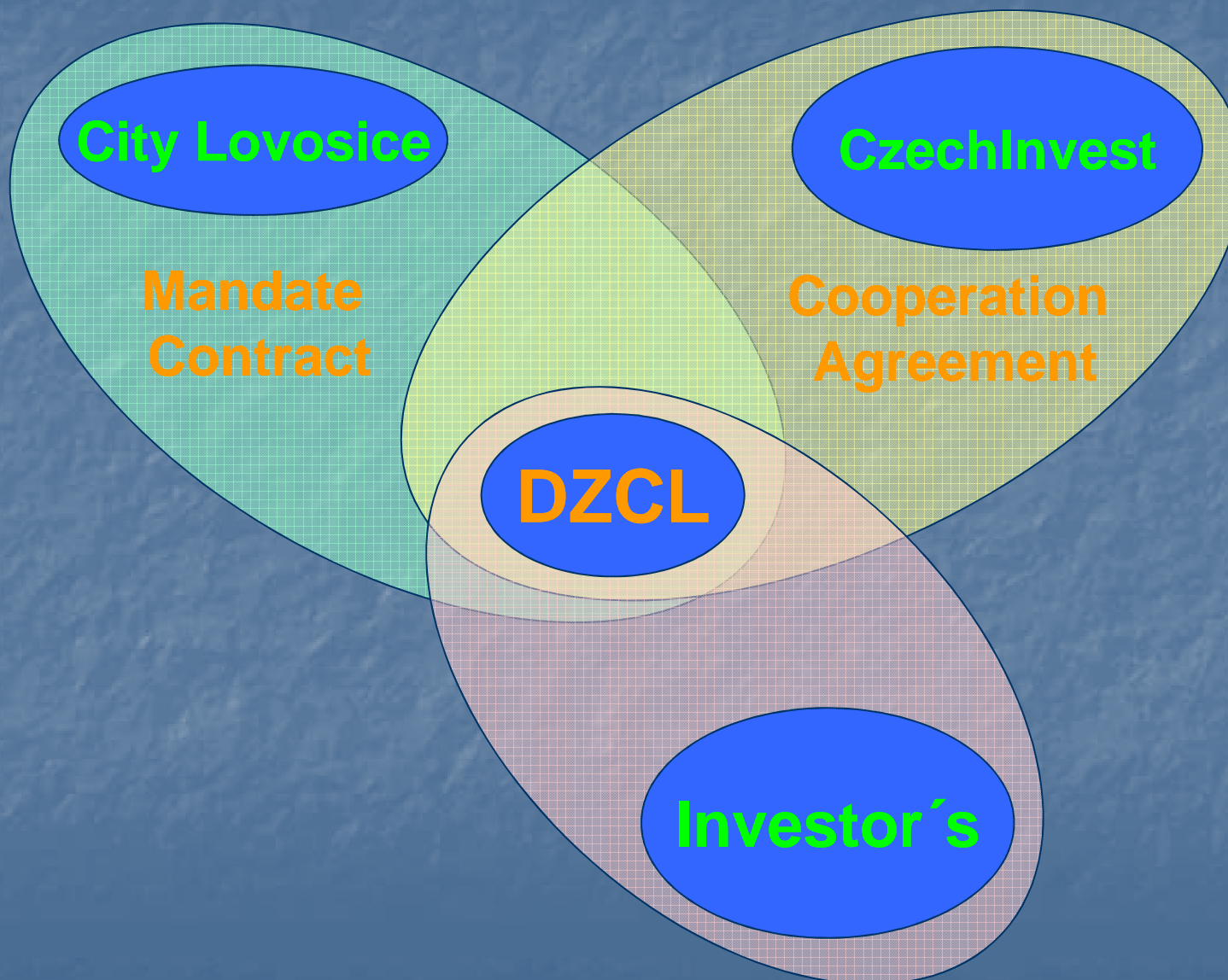
Dopravně zbožívé centrum Lovosice, a. s. (DZCL)

1998 – Company foundation

2002 – Stabilisation of company's equity:



Dopravně zbožívé centrum Lovosice, a. s. (DZCL)



Support from the Czech Republic and the EU

MINISTRY FOR REGIONAL
DEVELOPMENT
OF THE CZECH REPUBLIC



MINISTRY OF INDUSTRY
AND TRADE
OF THE CZECH REPUBLIC



TOWN LOVOSICE



CZECHINVEST

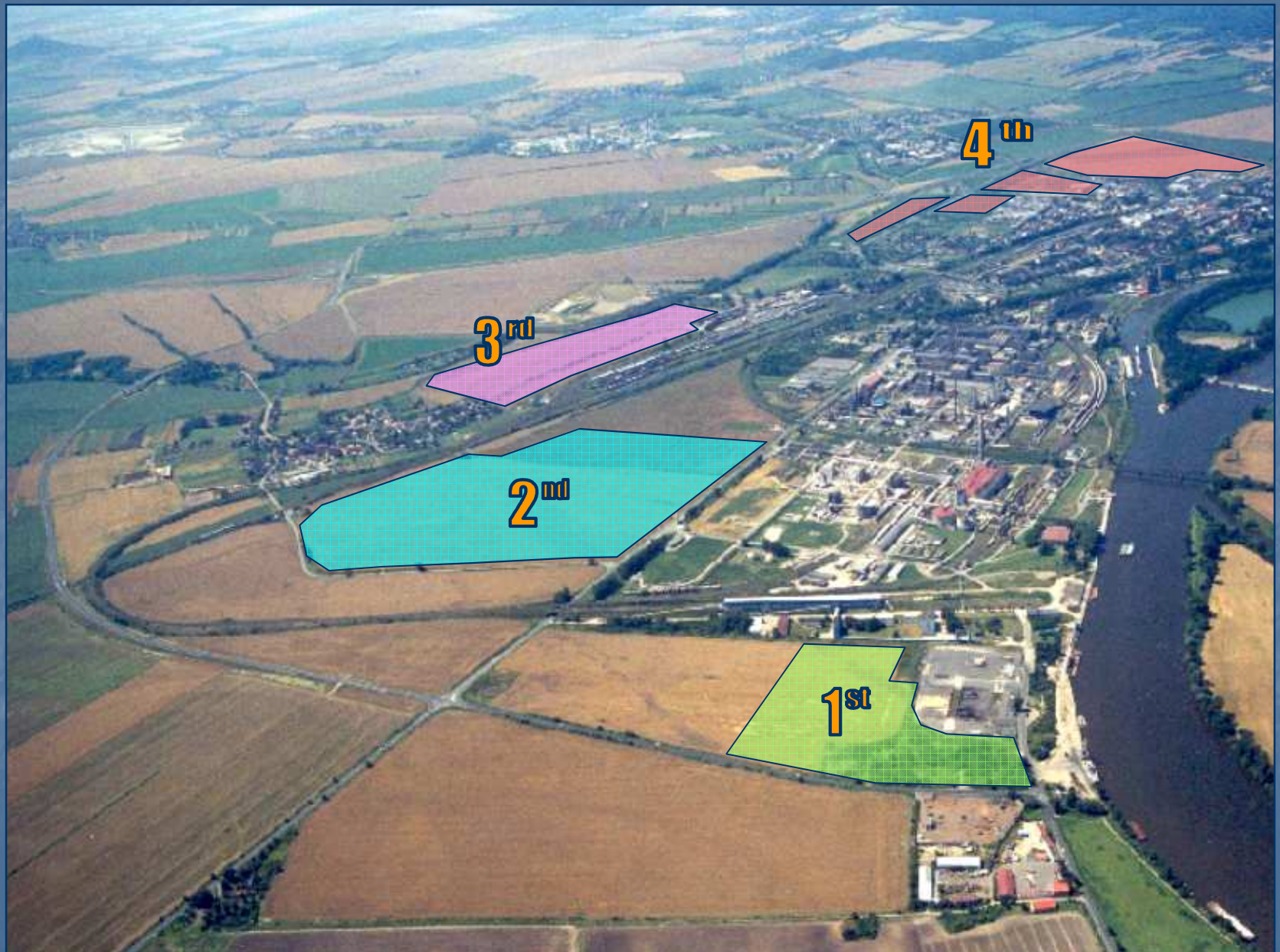
The Phare logo, featuring the word 'Phare' in white serif font on a maroon background. The background has a white corner that reveals a blue field with yellow stars, similar to the European Union flag.

Phare

Centre of Industry and Logistics Lovosice is:

ACCREDITED INDUSTRIAL ZONE
and
INDUSTRIAL ZONE OF THE YEAR 2002

Centre of Industry and Logistics Lovosice and its Zones



Investors in the 4th Zone



TSC



Tribology System for Cars



**Contract signature
2001-11-01**

**Ground Breaking Ceremony
2002-04-25**

**Construction completed
2002-12-09**



TSC

TOKAI RIKAI

**Multifunctional
switches
for Cars**



**Contract signature
2001-12-13**

**Ground Breaking Ceremony
2002-04-04**

**Construction completed
2002-12-09**



TSC



Metal Fasteners for Cars



**Contract signature
2002-06-20**

**Ground Breaking Ceremony
2002-09-10**

**Construction Completed
2003-06-21**

Places for other investors – 1st and 2nd Zones



Places for other investors – 3rd Zone



- 18 hectares of space available
- Basic buried services: Gas pipeline, electricity, drinking water, sewerage and surface-water, telecommunication connection within reach

Places for other investors – 4th Zone



Advantages in Lovosice

- **Multimodal Freight Centre – Highway, Railway, River**
- **Only one Industrial Zone from Point of view those Transport Combinations in CR**
- **High Throughput on the Transport Network**
- **Airports Praha-Ruzyně (1 hour), Vodochody (30 min.), Roudnice (15 min.)**
- **Lovosice = Praha (35 min.)**
- **Lovosice = Dresden (40 min.) – after Highway Construction**
- **Cargo Railway Station with very high Capacity**
- **Direct Connection with Centres of Industrial Production in CR, specially for Middle and Nord Czech Regions**
- **Customs Centre in Lovosice**
- **TSC is one of the Best Partner for your transport**

TSC

Trans-sped-consult – operator of container depot at Lovosice



TSC

Container depot



TSC

Container depot with our self shuttle-train



TSC

Depot – customs place



Offer to Cooperation

**Our container depot has capacity 1200 TEU.
We can make delivery to DOOR and just-in-time basis
on ourself LKW chassis and have contraced haulies
for transport harmful materials ADR 1-9 and provide storage
of these materials on depot (depot-customs place).**

**The depot has ourself shuttle-train,
container positions with electrical supply.**

**We cooperate with eg. Bohemiakombi (Kombiverkehr),
P&G Rakona MM s.r.o., Intercontainer Interfrigo Basel.**

**We hope, that you will be interested in our offer
and are looking forward to cooperation with you.**

Contact - Address:

Trans – sped – consult, s.r.o.
Lukavecká 1
410 02 LOVOSICE

tel.: +420 416 532 340,
+420 416 532 234

mobil: +420 602 623 107

fax.: +420 416 533 329,
+420 416 533 329

e-mail: trans.sped.consult@iol.cz