

# New European Responsible Care<sup>®</sup> management framework and self-assessment tool



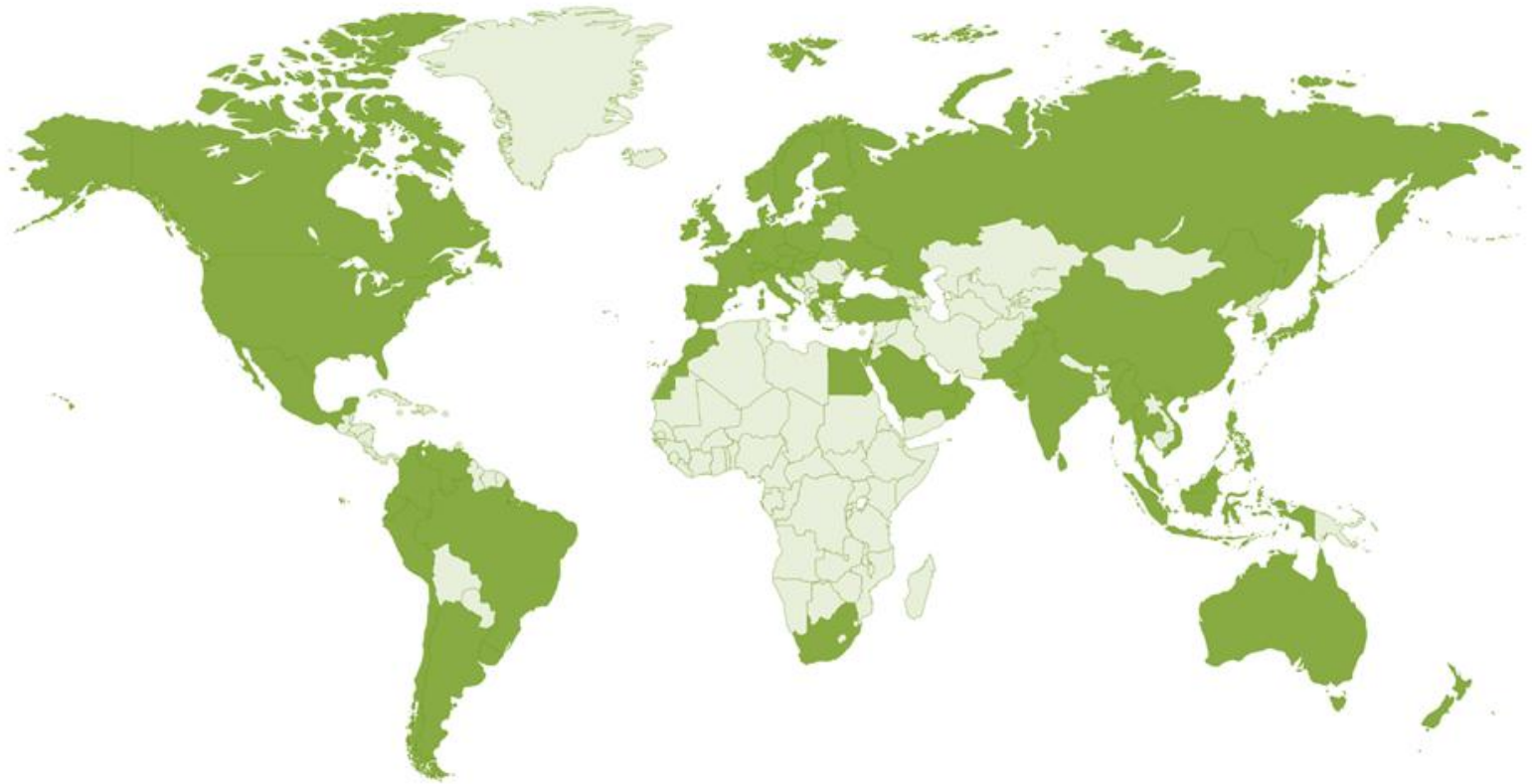
Launch in Slovakia- 25/26-09-2019

Giulia Casasole-Responsible Care manager at Cefic



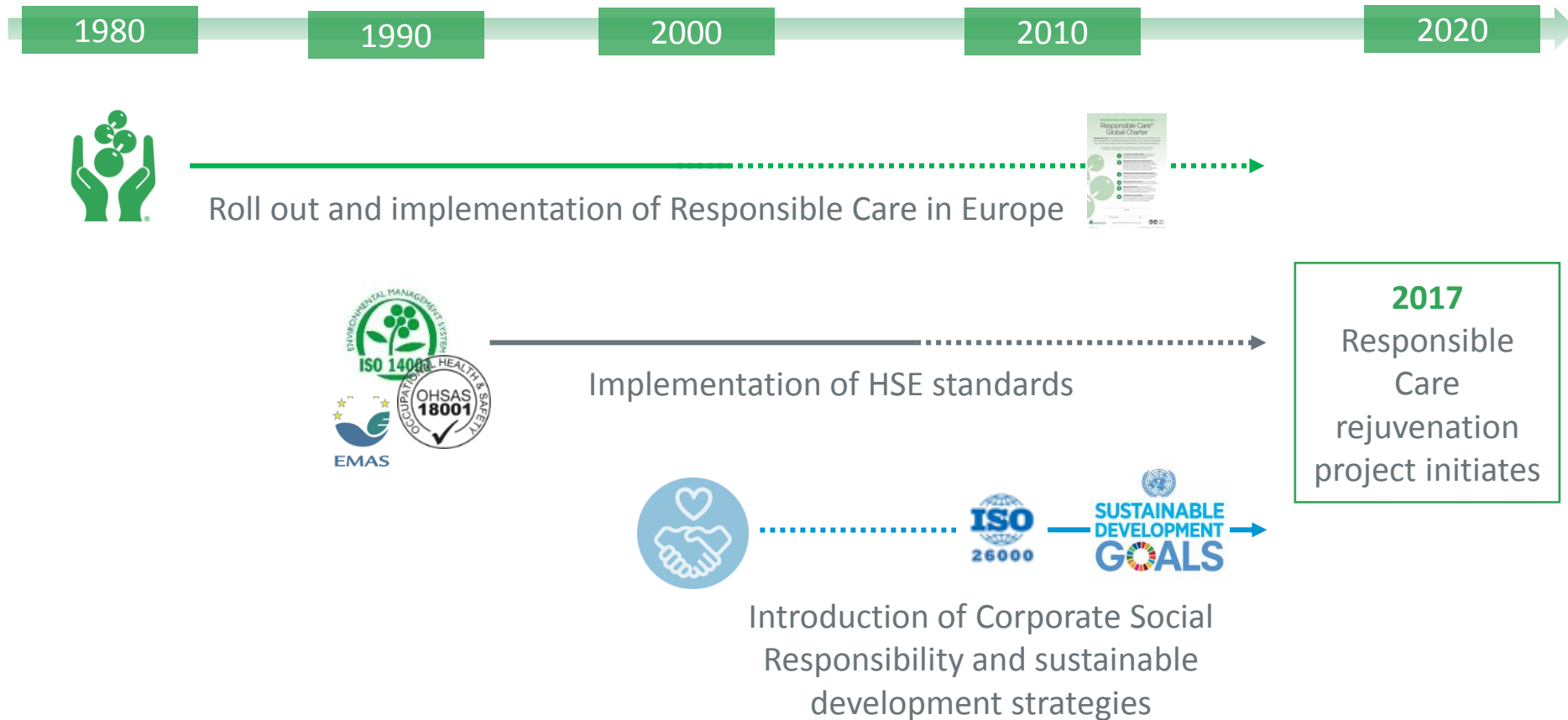


# 62 chemical associations in nearly 70 economies around the world implement Responsible Care



Almost 30 countries practice Responsible Care across Europe

# The challenge after three decades of Responsible Care in Europe



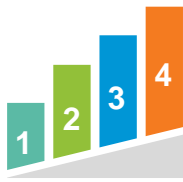
# Core elements of the Responsible Care rejuvenation



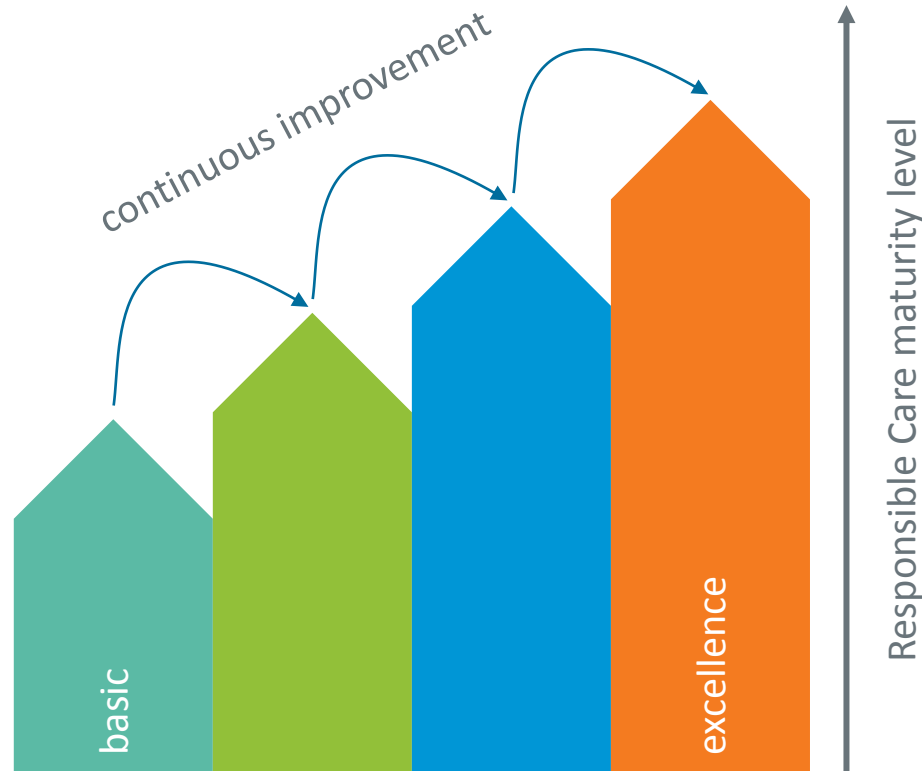


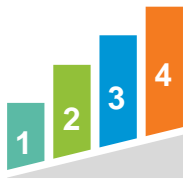
# 1. Connection of the Responsible Care global charter to standards & sustainability principles





## 2. Creation of maturity levels driving continuous improvement





# Maturity levels



## Level 1: Commit to Responsible Care

The candidate commits to Responsible Care and starts acknowledging the implementation steps

## Level 2: Initiate and Plan

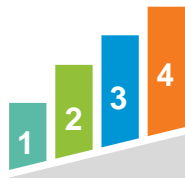
= PD: Planning and Doing: ad hoc actions

## Level 3: Improve continuously

= PDCA: Planning Doing Checking and Acting: full management system approach

## Level 4: Promote and Sustain Excellence

= Improved performance, improved effectiveness, share best practices, front runner



# Examples of maturity levels: Safeguarding people and the environment



## How are risks and exposures determined?

- a) Not systematically, but compliant to applicable legislation.
- b) Risk analyses are systematically applied to evaluate risks to employees related to processes, equipment and potential exposure to chemical, physical or biological agents.
- c) Applied risk analysis are workplace specific and individual specificities (pregnant women, handicaps, young employees, etc.) are taken into account with respect of privacy/confidentiality laws and protection of medical data of these workers.
- d) Good practices on risk analysis are promoted to business partners or through associations.





# 3. Development of practical support for regional implementation



## Consists of two tools:

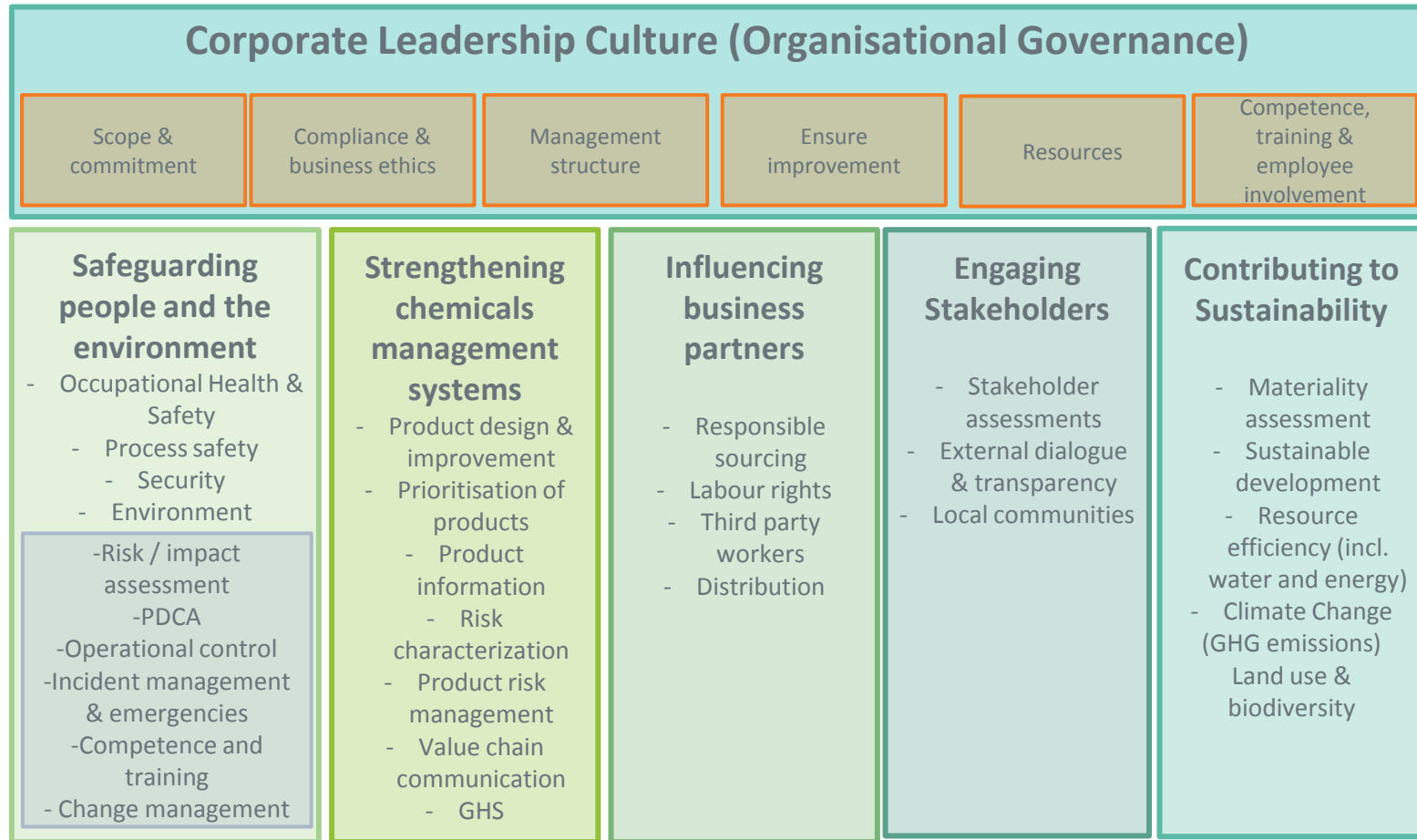
- Management framework
- Self-assessment tool

## Key characteristics

- ✓ User friendly
- ✓ Flexible – adaptable to regional needs
- ✓ Suitable for all size of companies
- ✓ Integrating existing national and international practices
- ✓ Respecting the unique Responsible Care characteristics



# Structure of the management framework and self-assessment tool



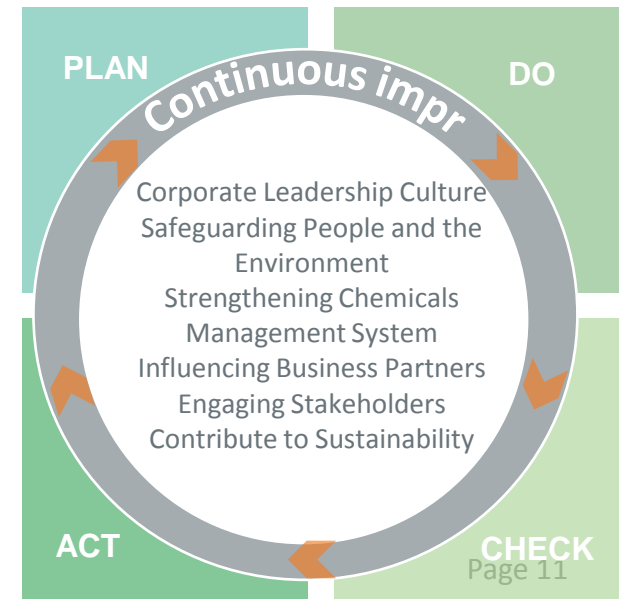
*The entire framework contributes to sustainability, specific focus questions are in chapter 6*



# What is the management framework?



- A guidebook (PDF) which explains the requirements of Responsible Care:
  - what it is
  - who the main actors are
  - what maturity levels are
  - how to implement it according to the six elements of the Responsible Care Global Charter.
- Based on Deming Cycle (PDCA Cycle), achieving continuous improvement





# The self-assessment tool in detail



## Responsible Care self-assessment tool

engineered by  
**ARCADIS** Design & Consultancy  
for natural and  
built assets

This tool guides companies in the chemical sector towards the implementation of Responsible Care.

It consists of following pages:

- Start and prefill
- Glossary
- Identification
- Six sets of questions, one for each Responsible Care chapter
- General outcome page scoring your Responsible Care performance
- Tips and best practices
- Two tabs with specific reports on reaching external standards and on reaching Sustainable Development Goals
- Action plan
- Two technical pages

This excel tool can best be used at zoom 100%.

version: 12/04/2019  
Arcadis



**Responsible Care**<sup>®</sup>  
OUR COMMITMENT TO SUSTAINABILITY

Responsible Care is the chemical industry's worldwide voluntary commitment to drive continuous improvement and achieve excellence in sound chemicals management.

Cefic has elaborated a new Responsible Care management system for Europe to pave the way for more European chemicals manufacturers to join the Responsible Care family whilst enhancing industry's reputation and trust.

The revised Responsible Care management system provides the European chemicals companies with a clear, inclusive and progressive pathway to continuous improvement.

It includes the development of practical tools (a Responsible Care management framework and a Responsible Care self-assessment tool) valuable to both companies and national associations, and the creation of maturity levels to help companies grow over time. It connects the European Responsible Care<sup>®</sup> to the highest possible standards (i.e. quality management ISO9001, environmental management ISO14001, EMAS, energy management ISO50001, health & safety ISO45001, ISO26000, RC 14001 and RCMS, two technical specifications from the American Chemistry Council globally applied) along with Sustainability Principles (i.e. UN Sustainable Development Goals, Cefic Sustainability Charter and ChemistryCan Initiative). Ultimately, it contributes to a harmonized approach of Responsible Care at the ICCA level.

The revised management system wants to be inclusive, enabling small and large, companies or sites, with experience in Responsible Care and standards or without, to get started on performance excellence and have a view on how to improve over time. Therefore, it includes **4 maturity levels** representing four different levels of Responsible Care implementation as follow:

<b>Level 1</b>	Commit to Responsible Care	The candidate commits to Responsible Care and starts acknowledging the implementation steps.
<b>Level 2</b>	Initiate and Plan	PD - Planning and Doing: the organisation has started implementing Responsible Care throughout its business, plans are made to improve and implement.
<b>Level 3</b>	Improve Continuously	PDCA - Planning Doing Checking and Acting: the organisation has reached a level of implementation where the plans and actions are not only done, but also assessed to drive continuous improvement; full management system approach.

Front page | Start and prefill | Glossary | Identification | **Chapter 1** | Chapter 2 | Chapter 3 | Chapter 4 | Chapter 5 | Chapter 6 | General outcome | Tips | Specific reports | SDG report | Action plan | Technical pa ... +





# What is the Responsible Care self-assessment tool?



**A questionnaire with 101 multiple-choice questions in excel**

- Pre-fill buttons when ISO Certified
- Four answers for each question, reflecting the four maturity levels
- Implementation tips provided
- Answers linked with international and market standards



# How much time does it take?



Total time required: ave. 3 hours

# Number of questions to complete manually once certified



79 questions when ISO 9001 certified

70 questions when ISO 14001 certified

74 questions when ISO 45001 certified

81 questions when ISO 50001 certified

63 questions when ISO 9001 and 14001 certified

66 questions when ISO 14001 and 45001 certified

**54 questions when ISO 9001, ISO 14001 and 45001 certified**

**53 questions when ISO 9001, ISO 14001, 45001 and 50001 certified**

67 questions when EMAS certified

55 questions when RC14001 certified

63 questions when RCMS certified

26 questions are linked to ISO 26000  
43 questions are linked to 17 UN  
SDGs



# Responsible Care self-assessment tool tested by 55 companies over Europe



Very good  
feedback on  
content and  
functionalities

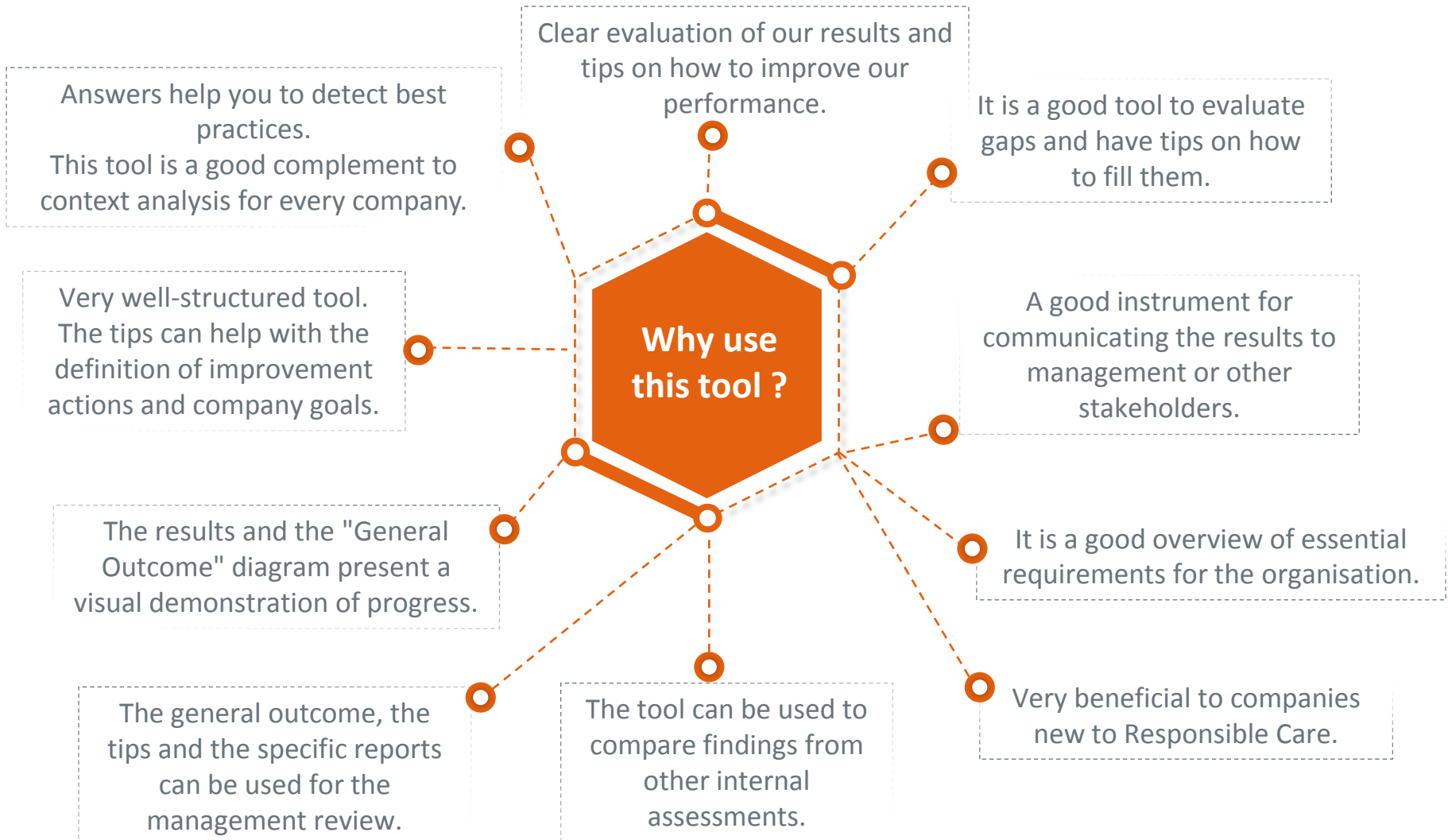


Testing feedback endorsed in the final version of the Responsible Care self-assessment tool





# Value of the Responsible Care self-assessment tool





# Practical guidance on the use of the Responsible Care self-assessment tool



- [Link to instruction movie](#)
- If you would like more information on how to use the self-assessment tool please look at the Appendix of the Responsible Care management framework on the [Responsible Care webpage](#)

# Thank you!

# Questions ?



Contact Giulia Casasole

Responsible Care Manager

[gca@cefic.be](mailto:gca@cefic.be)